

# Outer Dowsing Offshore Wind

## Environmental Statement

Chapter 8 Marine Water and  
Sediment Quality

Volume 2 Figures

Date: March 2024

Pursuant to APFP Regulation: 5(2)(a)

Document Reference: 6.2.8



Company:	<b>Outer Dowsing Offshore Wind</b>	Asset:	<b>Whole Asset</b>			
Project:	<b>Whole Wind Farm</b>	Sub Project/Package:	Whole Asset			
Document Title or Description:	Chapter 8 Marine Water and Sediment Quality Figures					
Internal Document Number:	PP1-ODOW-DEV-CS-REP-0008	3 <sup>rd</sup> Party Doc No (If applicable):	N/A			
Outer Dowsing Offshore Wind accepts no liability for the accuracy or completeness of the information in this document nor for any loss or damage arising from the use of such information.						
<b>Rev No.</b>	<b>Date</b>	<b>Status / Reason for Issue</b>	<b>Author</b>	<b>Checked by</b>	<b>Reviewed by</b>	<b>Approved by</b>
Rev01	March 2024	DCO Application	GoBe	GoBe	Shepherd & Wedderburn	Outer Dowsing

## Table of Figures











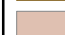

- Figure 8.1 MWSQ Study Area (document reference 6.2.8.1)
- Figure 8.2 Sediment Characterisation (document reference 6.2.8.2)
- Figure 8.3a Sample Locations PAH (document reference 6.2.8.3a)
- Figure 8.3b Sample Locations Metals (document reference 6.2.8.3b)
- Figure 8.4 Marine Water and Sediment Quality Figure (document reference 6.2.8.4)

350000

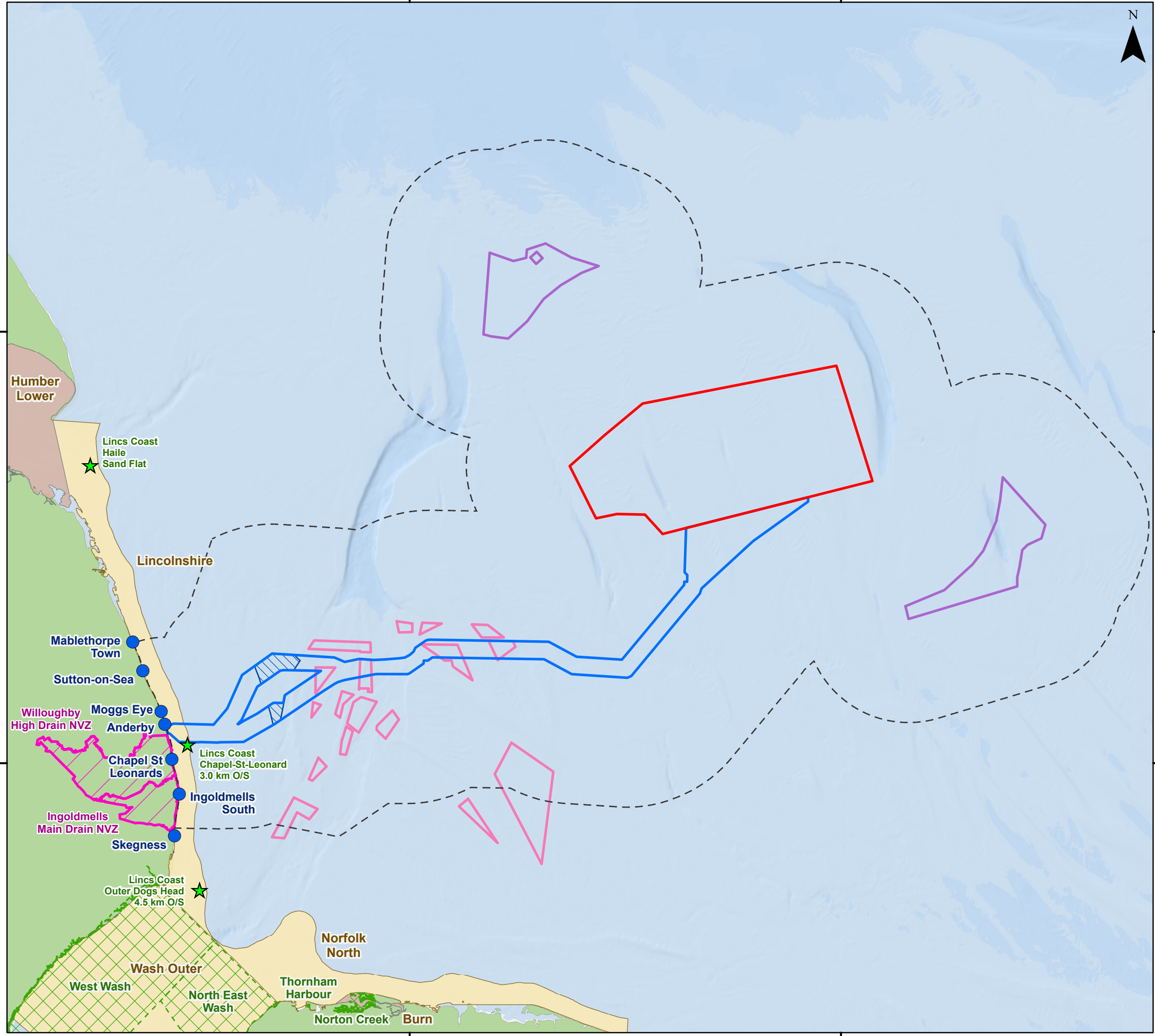
400000



### Legend

-  Array Area
  -  Offshore Export Cable Corridor
  -  ORCP Area
  -  Artificial Nesting Structure Area
  -  Biogenic Reef Restoration Area
  -  MW&SQ Zone of Influence
  -  Bathing Water Sites
  -  Monitoring Stations/Points
  -  Nitrate Vulnerable Zone
  -  Shellfish Waters
- Waterbodies**
-  Coastal
  -  Transitional

Document Path: Z:\GIS\GIS - Projects\0152 Outer Dowsing EIA\GIS\Figures\ES\MMWSQ\ODOW\_0152\_MMWSQ\_Fig8\_1\_MMWSQ\_Study\_Area.mxd

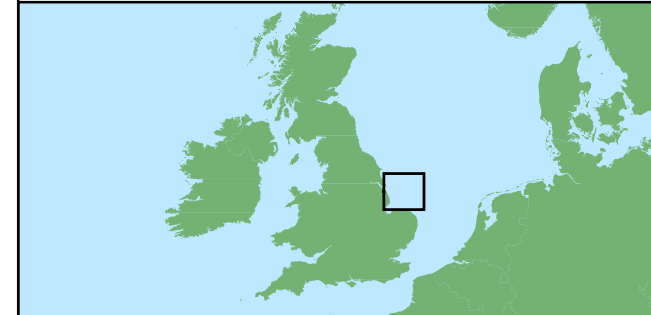


5950000

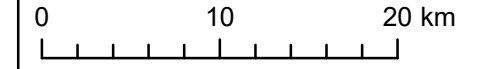
000565

5900000

000565



Coordinate System: WGS 1984 UTM Zone 31N



Scale: 1:425,000

A3 Page Size

### Environmental Statement

Marine Water and Sediment Quality Study Area

Figure 8.1



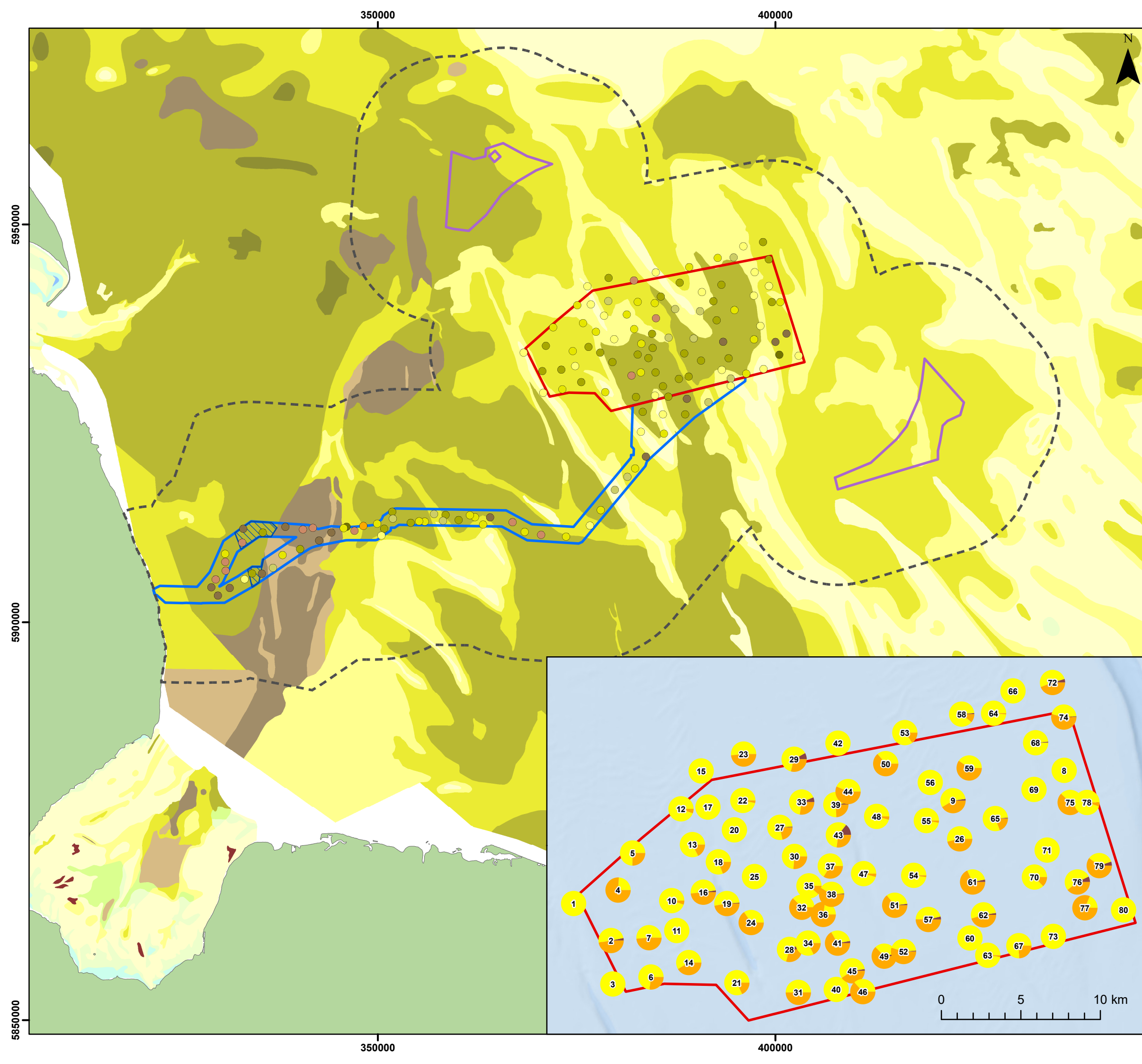
Date: 16/02/2024  
Produced By: BPHB  
Revision: 0.1



Contains ESRI Basemapping;  
Esri, Garmin, GEBCO, NOAA  
NGDC, and other contributors

350000

400000



**Legend**

- Array Area
- Offshore Export Cable Corridor
- ORCP Area
- Artificial Nesting Structure Area
- Physical Processes Zone of Influence

**Seabed Sediments (FOLK)**

- 1.1.1 Mud
- 1.1.2 (gravelly) Mud
- 1.2.1 sandy Mud
- 1.3.1 muddy Sand
- 1.3.2 (gravelly) muddy Sand
- 2.1.1 Sand
- 2.1.2 (gravelly) Sand
- 3.1.1 gravelly Sand
- 3.2.1 sandy Gravel
- 3.3.1 Gravel
- 4.1.1 gravelly Mud
- 4.3.1 gravelly muddy Sand
- 4.4.1 muddy sandy Gravel
- 5. Rock and Boulders

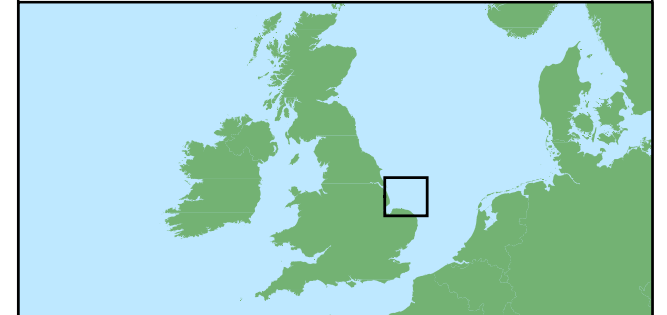
**Benthic Samples - Folk Class (GEOxyz, August / November 2022)**

- Sand
- Slightly Gravelly Sand
- Slightly Gravelly Muddy Sand
- Gravelly Sand
- Sandy Gravel
- Muddy Sandy Gravel
- Gravelly Muddy Sand
- Gravel

**Sediment composition (%)**

- Fines
- Sand
- Gravel

Seabed Sediments 1:250 000 – Europe  
© EMODnet Geology, European Commission, 2016



Coordinate System: WGS 1984 UTM Zone 31N

0 10 20 km

Scale: 1:450,000

A3 Page Size

Environmental Statement

Sediment Characterisation using Project Specific Sampling and Existing Data Sources

Figure 8.2



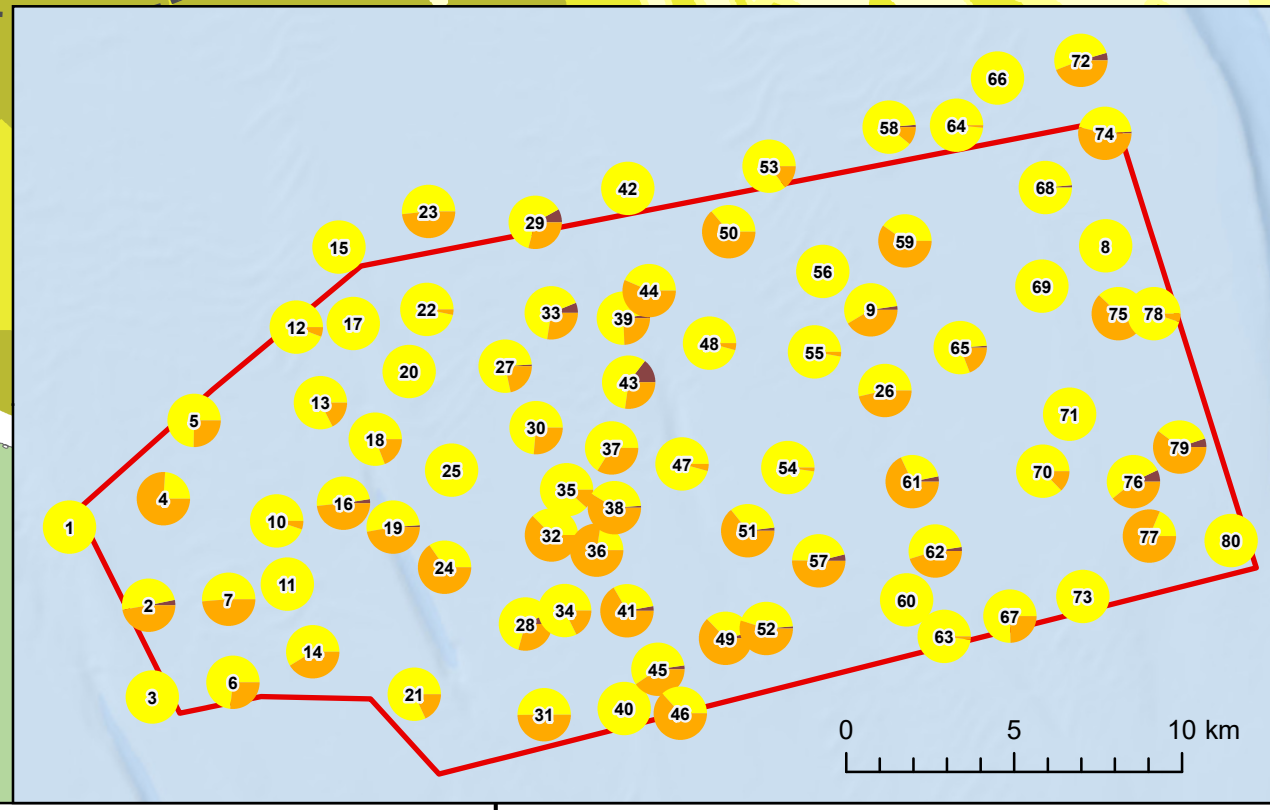
**OUTER DOWSING**  
OFFSHORE WIND



**GoBe**

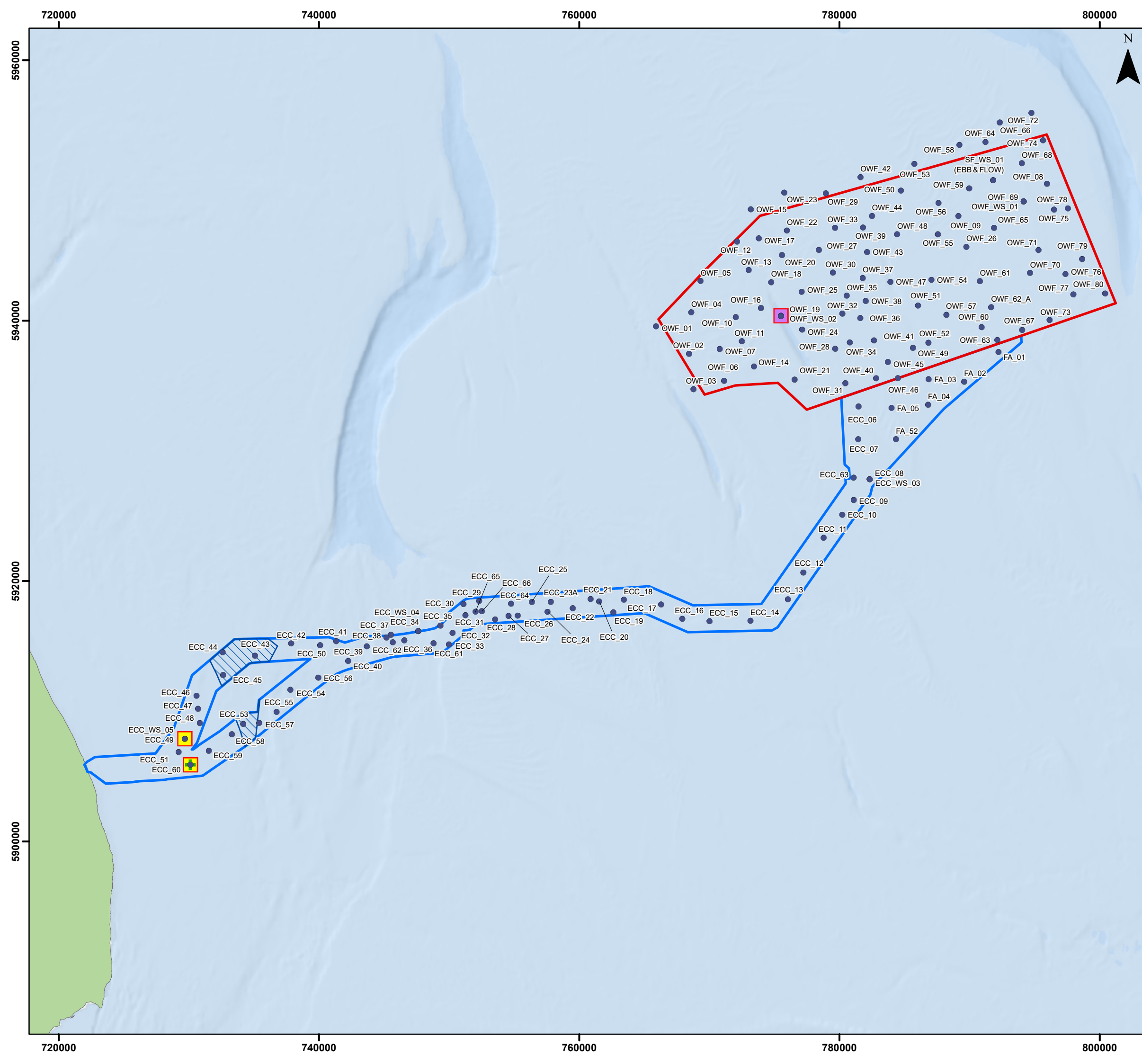
Date: 16/02/2024  
Produced By: BPHB  
Revision: 0.1

Contains ESRI Basemapping;  
Esri, Garmin, GEBCO, NOAA  
NGDC, and other  
contributorsEMDnet Geology



Document Path: Z:\GIS\GIS - Projects\0152 Outer Dowsing EIA\GIS\Figures\ESMS\MMSQ\ODOW\_0152\_MMSQ\_Fig 2\_Sediment\_Characterisation.mxd



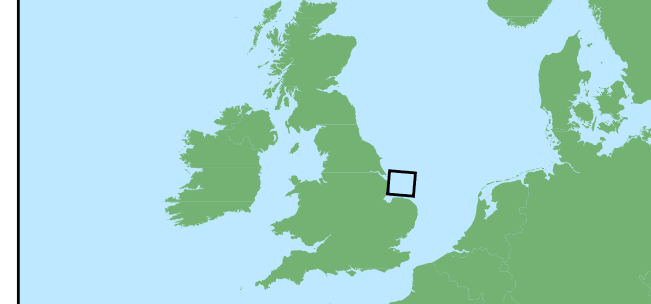
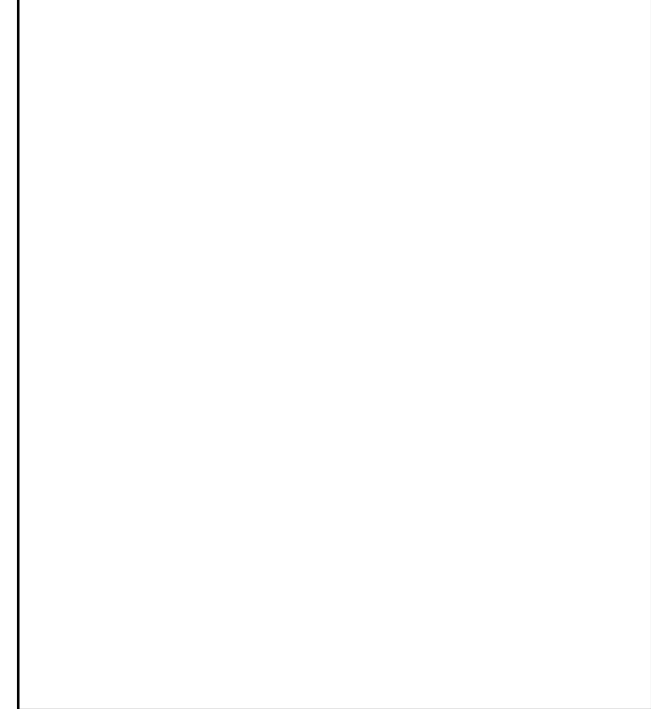


### Legend

- Array Area
- Offshore Export Cable Corridor
- ORCP Area
- Grab Sampling Locations

### PAH

- TEL exceeded for Acenaphthene
- TEL exceeded for Phenanthrene
- TEL exceeded for Dibenzo(a,h)anthracene and Naphthalene
- + USEPA ERL exceeded for Fluorene



A3 Page Size

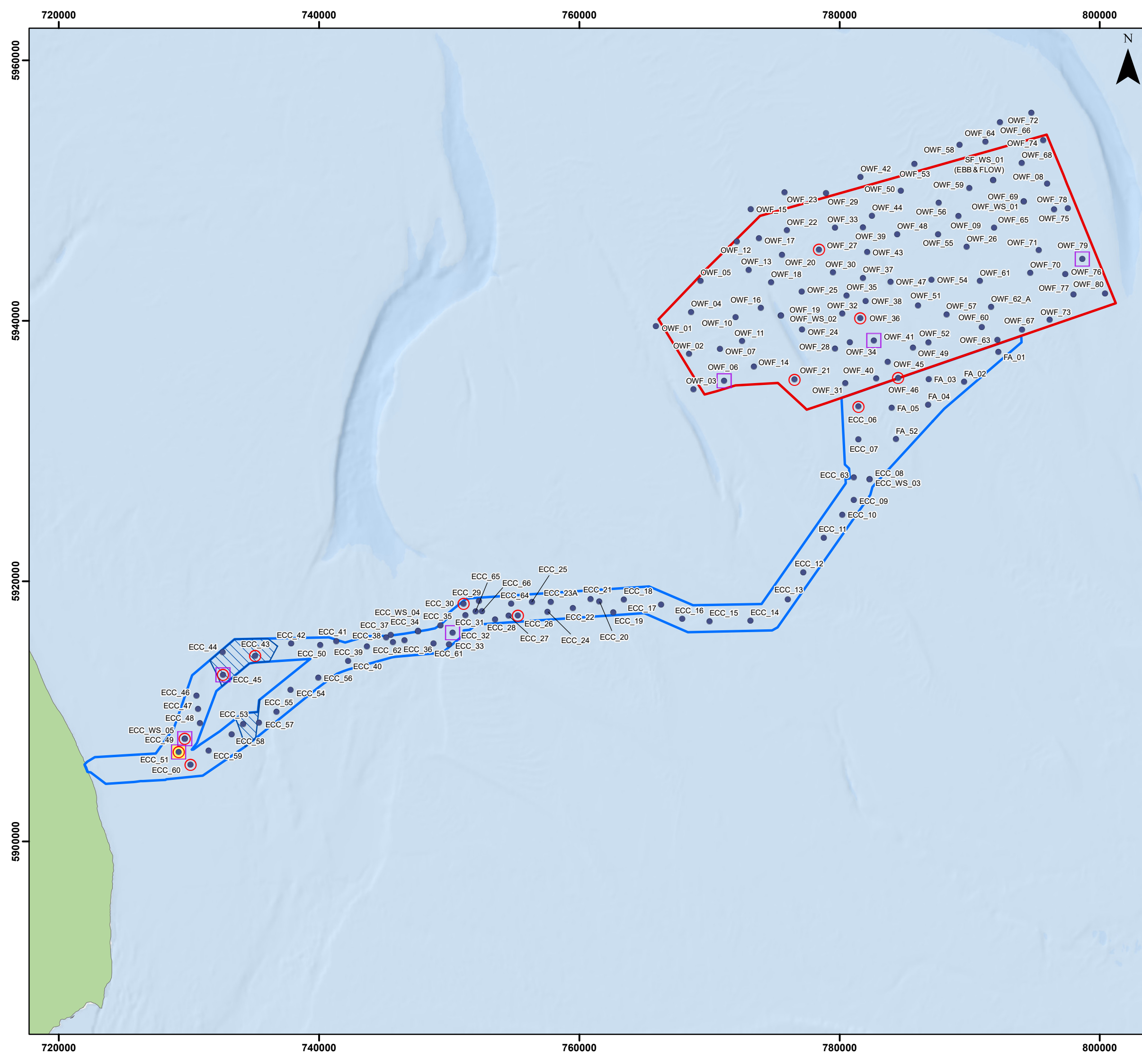
Environmental Statement

Site Specific Survey Locations within the Project ECC and Array Area - PAH

Figure 8.3a



Document Path: Z:\GIS\GIS - Projects\0152 Outer Dowsing EIA\GIS\Figures\ESM\MSQ\ODOW\_0152\_MMSQ\_Fig8\_3a\_Sample\_Locations\_PAH.mxd

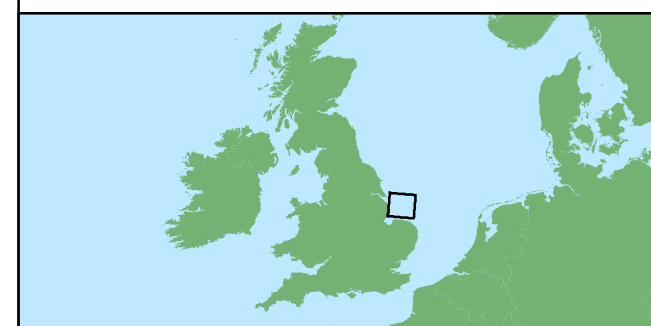


**Legend**

- Array Area
- Offshore Export Cable Corridor
- ORCP Area
- Grab Sampling Locations

**Metals**

- AL1 exceeded for Arsenic
- AL1 exceeded for Nickel
- AL1 exceeded for Chromium



Coordinate System: WGS 1984 UTM Zone 30N

0 5 10 km

Scale: 1:275,000

A3 Page Size

Environmental Statement

Site Specific Survey Locations within the Project ECC and Array Area - Metals

Figure 8.3b



Document Path: Z:\GIS\GIS - Projects\0152 Outer Dowsing ELA\GIS\Figures\ESM\MSQ\ODOW\_0152\_MWSQ\_Fig8.3b\_Sample Locations\_Metals.mxd



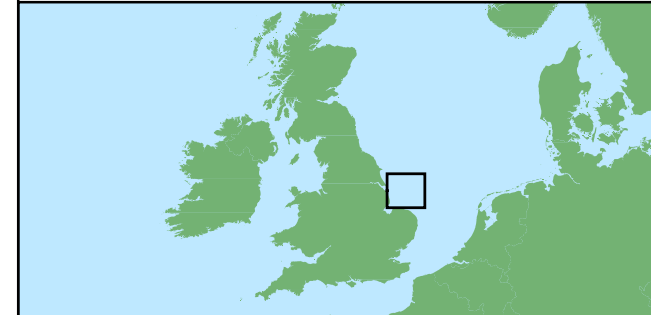
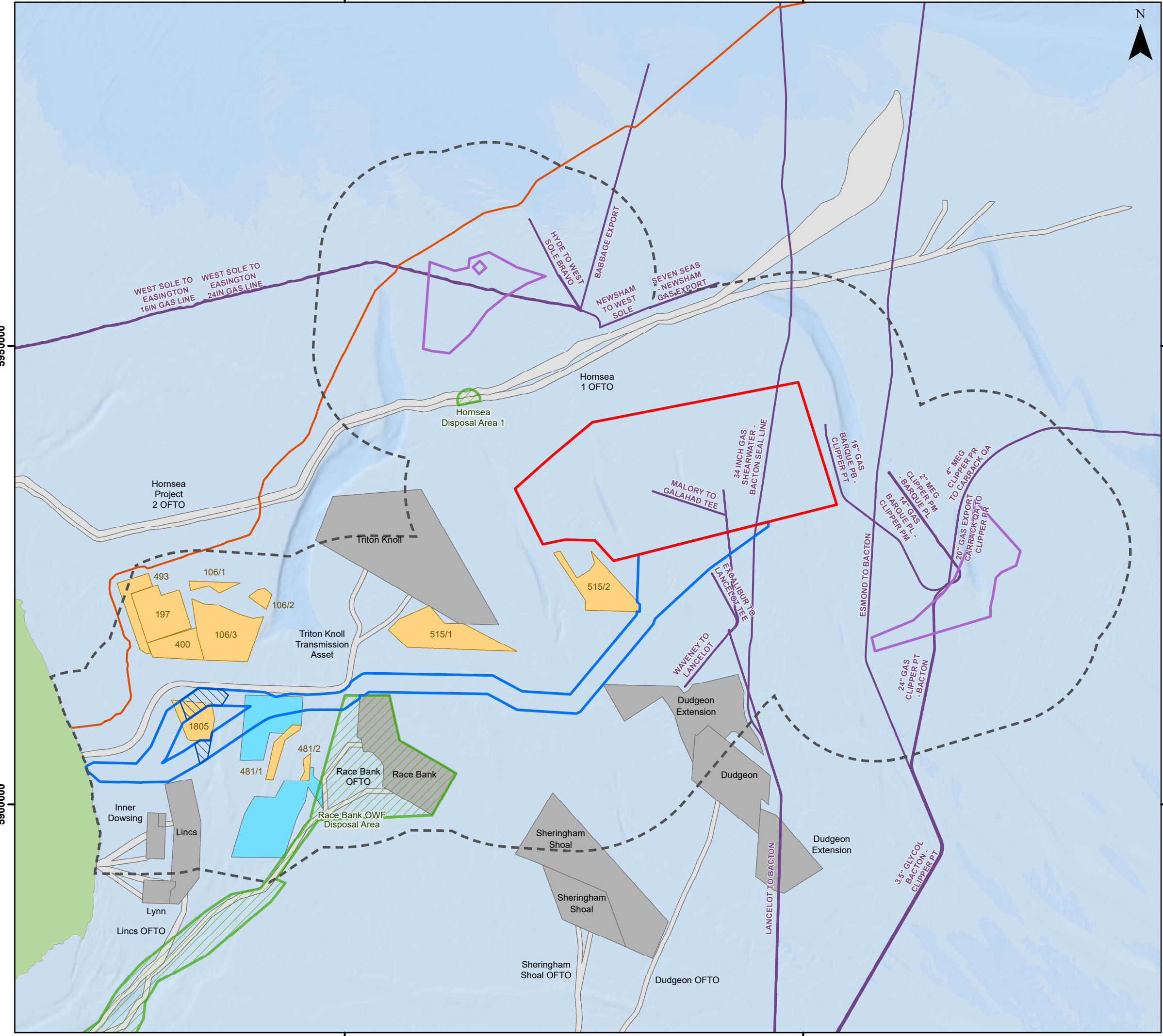
350000

400000

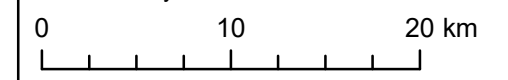


### Legend

- Array Area
- Offshore Export Cable Corridor
- ORCP Area
- Artificial Nesting Structure Area
- Physical Processes Zone of Influence
- Offshore Wind Farm Sites
- Offshore Wind Farm Cable Agreements
- Aggregate Area
- Provisional Aggregates Area (2103)
- Open Disposal Area
- Viking Link Interconnector
- Subsea Pipeline



Coordinate System: WGS 1984 UTM Zone 31N



Scale: 1:400,000

A3 Page Size

### Environmental Statement

Location of Cumulative Projects relative to the MW&SQ Study Area

Figure 8.4



Date: 16/02/2024  
 Produced By: BPHB  
 Revision: 0.1



Contains ESRI Basemapping;  
 Esri, Garmin, GEBCO, NOAA  
 NGDC, and other contributors

Document Path: Z:\GIS\GIS - Projects\0152 Outer Dowsing EIA\GIS\Figures\ESM\MSQ\ODOW\_0152\_MW&SQ\_Fig 4\_Cumulative\_Projects.mxd

5950000

5950000

5900000

5900000

350000

400000